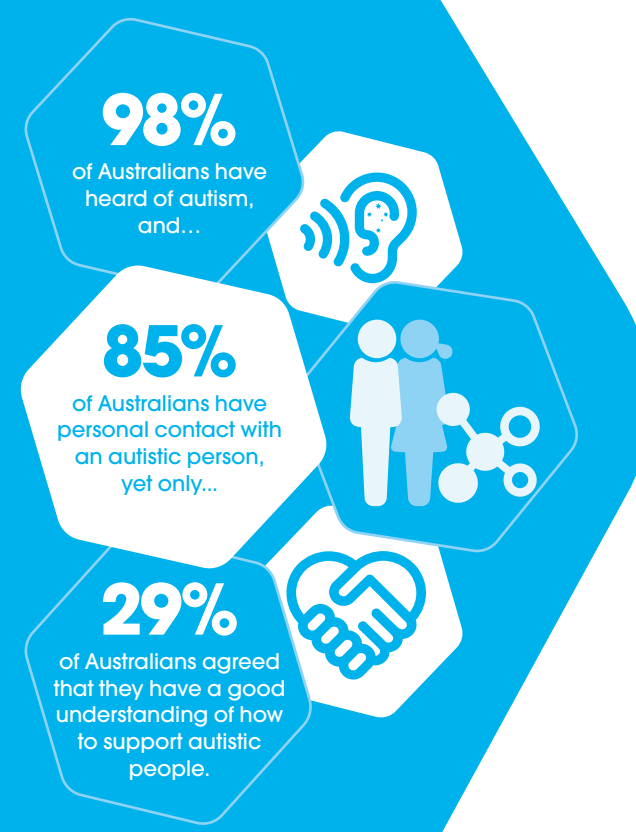
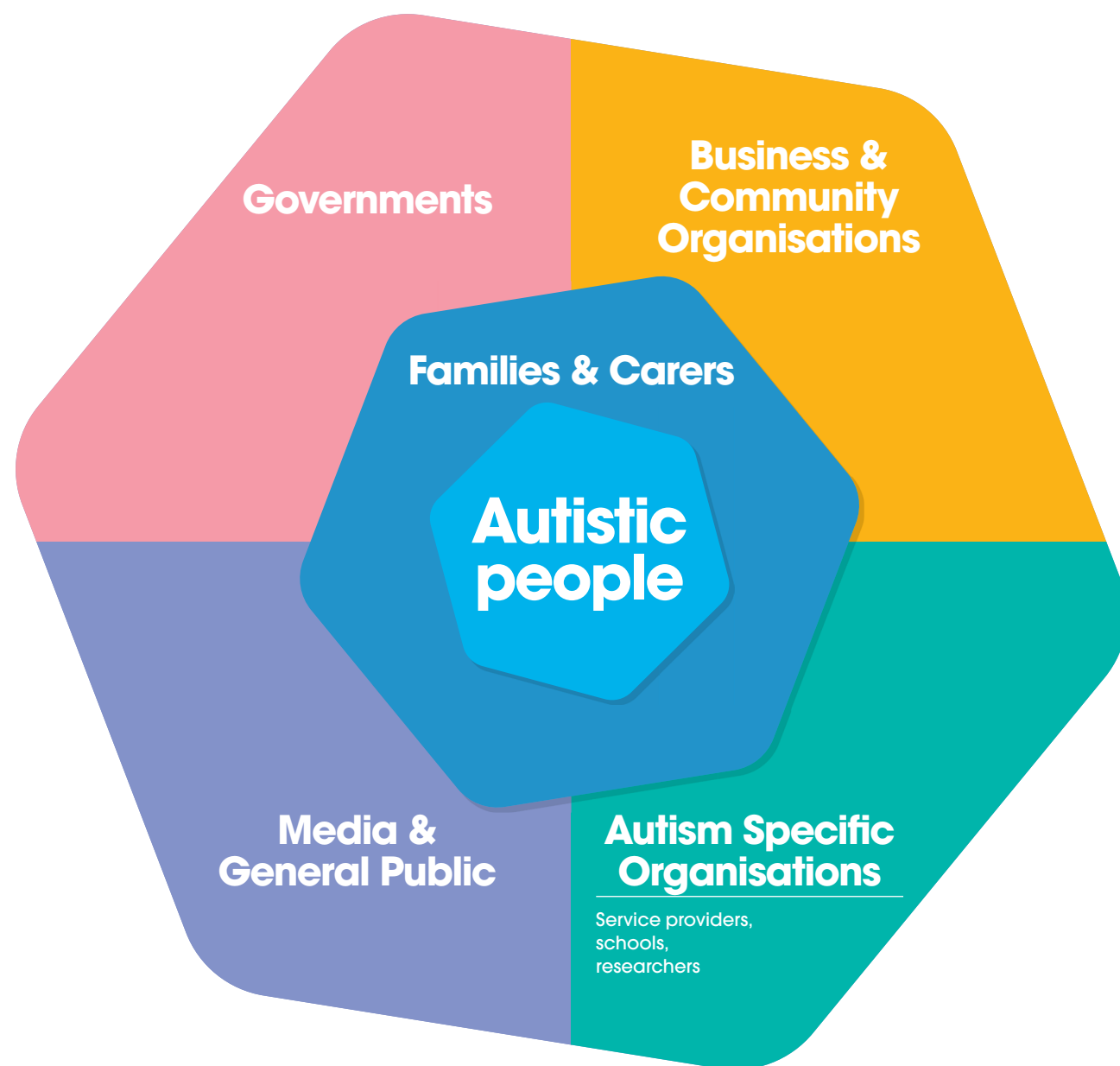


Working in collaboration

In the next 3 years to 2021, we will focus on making change in all parts of society to improve the lives of autistic people.

Amaze's role is to facilitate and amplify the voices of those with the lived experience of autism, believing autistic people and their families to be the experts in what they need. We want these voices heard, embraced and action taken to improve the lives of all autistic people.

Amaze will proactively engage with the autism community, as outlined below, to inform our priorities, build capacity, strengthen relationships and to advocate for change. By working collaboratively we will maximise Amaze's impact and reach.



Amaze Strategic Plan to 2018-2021

Amaze's role is to ensure the voices of autistic people and their families are heard and their needs met.

We advocate to governments and work in partnership with the community to build wider understanding, engagement and acceptance of autistic people.

In the next 3 years to 2021, we will focus on making change in all parts of society to improve the lives of autistic people.

Our Reach & Impact

Amaze conducts national "Community Attitudes to Autism" study and "Experiences of autistic people & their families/ carers" Victorian survey at regular intervals to assess changes in society's attitudes and abilities to understand, engage and accept autism. In 2017, the first of these studies was conducted and the findings guide Amaze's future planning and initiatives and provide a baseline data from which we can measure change over time. At the time of publication, Amaze has not released the results of these studies. Over the coming months Amaze will release these results, and how they directly correlate with the below measures and will be populated with baseline data.

Understand

Community understanding of autism in Victoria increases over time.

We will know this by measuring:

- More people understand the key facts about autism
- More people understand what autism is and isn't and don't believe myths
- More people know how autism can affect behaviour

Working in
Mental Health & Autism

50-70% of autistic people also experience mental illness



Amaze will build understanding of the co-occurrence of autism and mental illness, so service providers are more confident and responsive.

Working with
Women & Girls

The ratio of autistic males:females has changed from 4:1 to **3:1**



Amaze will work to ensure more people understand and respond to the different needs of autistic women and girls

Engage

More institutions are building their capabilities to positively engage with autistic people / Discrimination decreases.

We will know this by measuring:

- More people involve autistic people to understand their capabilities and needs
- More people access resources to learn more about autism
- More people have the skills to support autistic people to learn, work and socialise

Working to
Improve access to diagnosis

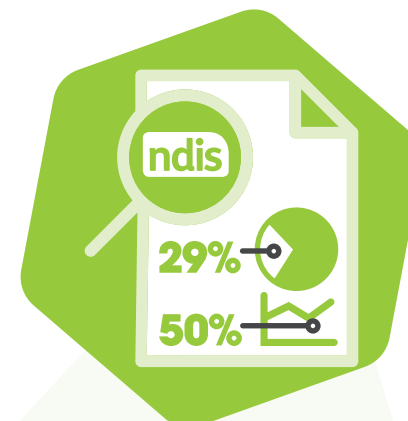
Autism diagnosis: Wait times up to **5 years**, personal costs up to **\$2,750**, no nationally consistent standards



Amaze will work to ensure consistency and equality (cost, waiting time) in accessing a diagnosis, for all autistic people

Working with
NDIS

Second largest NDIS diagnostic group **29%** of total plans, **50%** of all plans for 0-7yrs



Amaze will work to ensure more people understand their eligibility, how to access information, and receive quality supports or services through the NDIS

Accept

Opportunities for meaningful participation and valued contribution increase for autistic people.

We will know this by measuring:

- More adjustments are made in education, workplaces, recreation and community organisations for autistic people
- More autistic people and their families are afforded their basic human rights
- More autistic people feel socially connected and participate in economic and social activities

Working in
Education

35% of autistic students only achieve **Year 10** or less and **96.7%** face some restriction in accessing education



Amaze will work with the Department of Education to better equip schools and staff to make the necessary changes to improve the educational outcomes for autistic students.

Working in
Employment

Unemployment for autistic people was **31.6%**, almost **six times** the rate of people without disability (**5.3%**)



Amaze will work with employers and Government to overcome barriers and increase opportunities to employment.